



## Tycehurst Hill, Loughton IG10 1BZ

**£8,500**

Will suit a Family - Sharers - Company Let

Birchills Estate Agents are extremely proud to present this truly spectacular 7 double bedroom detached home for RENT, within very close walking distance to Loughton tube station.

The basement of this stunning property comprises of a swimming pool, sauna, cinema room, bar, kitchen area and a Jacuzzi.

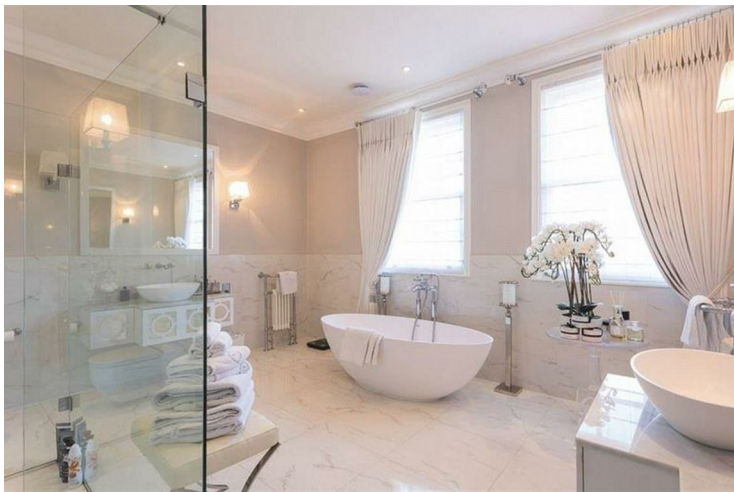
The ground floor of this lovely home offers a large entrance hall with staircase, 5 reception rooms, kitchen with breakfast island and a downstairs wc.

On the 1st floor this property boasts 5 double bedrooms, all of which have luxurious en-suite bathrooms.


The second floor comprises of a further 2 double bedrooms both of which have en-suite bathrooms and dressing room suits

To the rear of this spectacular home there is a truly marvellous garden that contains an outbuilding and a huge BBQ area for entertaining

## Tycehurst Hill, Loughton IG10 1BZ





Energy Efficiency Rating		Current	Potential
Very energy efficient - lower running costs		82	91
(92 plus) A			
(81-91) B			
(69-80) C			
(55-68) D			
(39-54) E			
(21-38) F			
(1-20) G			
Not energy efficient - higher running costs			
England & Wales		EU Directive 2002/91/EC	
			
Environmental Impact (CO <sub>2</sub> ) Rating			
		Current	Potential
Very environmentally friendly - lower CO <sub>2</sub> emissions		79	86
(92 plus) A			
(81-91) B			
(69-80) C			
(55-68) D			
(39-54) E			
(21-38) F			
(1-20) G			
Not environmentally friendly - higher CO <sub>2</sub> emissions			
England & Wales		EU Directive 2002/91/EC	
		